

**2006 IDAHO BLM FIRE AVIATION ORIENTATION GUIDE  
APPENDIX E: FREQUENCIES**

**IDAHO BLM**

**2006 FIRE AVIATION  
ORIENTATION GUIDE**

**APPENDIX E**

***FREQUENCY DIRECTORY***

**2006 IDAHO BLM FIRE AVIATION ORIENTATION GUIDE**  
**APPENDIX E: FREQUENCIES**

**2006 IDAHO BLM FIRE AVIATION ORIENTATION GUIDE**  
**APPENDIX E: FREQUENCIES**

**Table of Contents**

*Table E-1: Idaho VHF-AM Air-to-Air and VHF-FM Air-Ground Frequency List..... E-5*  
*Figure E-1: Eastern Great Basin Area VHF-FM Air-Ground and VHF-AM Air-Air*  
*Frequencies..... E-6*  
*Figure E-2: Northwest Area VHF-FM Air-Ground and VHF-AM Air-Air Frequencies .. E-7*  
*Figure E-3: Western Great Basin Area VHF-FM Air-Ground and VHF-AM Air-Air*  
*Frequencies..... E-8*  
*Figure E-4: California Area VHF-FM Air-Ground and VHF-AM Air-Air Frequencies..... 9*  
*Figure E-5: Northern Rockies Area VHF-FM Air-Ground and VHF-AM Air-Air*  
*Frequencies..... E-10*  
*Figure E-6: Rocky Mtn Area VHF-FM Air-Ground and VHF-AM Air-Air Frequencies E-11*  
*Table E-2: Boise District Frequency List (includes Boise NF frequencies) ..... E-12*  
*Figure E-7: Boise District Frequency Map ..... E-14*  
*Table E-3: BLM VHF-FM Frequencies: Idaho Falls District ..... E-15*  
*Figure E-8: Idaho Falls District Frequency Map..... E-17*  
*Figure E-9: Idaho Falls District Frequency Map With Interagency Initial Attack Zones*  
*and Frequencies..... E-18*  
*Table E-4: BLM VHF-FM Frequencies: Twin Falls District Frequency List (Includes*  
*USFS Frequencies) ..... E-19*  
*Figure E-10: Twin Falls District Frequency Map ..... E-21*  
*Figure E-11: BLM and USFS Interagency VHF-FM Frequency Map for the Twin Falls*  
*District and US Forest Service..... E-22*

**2006 IDAHO BLM FIRE AVIATION ORIENTATION GUIDE**  
**APPENDIX E: FREQUENCIES**

**2006 IDAHO BLM FIRE AVIATION ORIENTATION GUIDE  
APPENDIX E: FREQUENCIES**

**Table E-1: Idaho VHF-AM Air-to-Air and VHF-FM Air-Ground Frequency List**

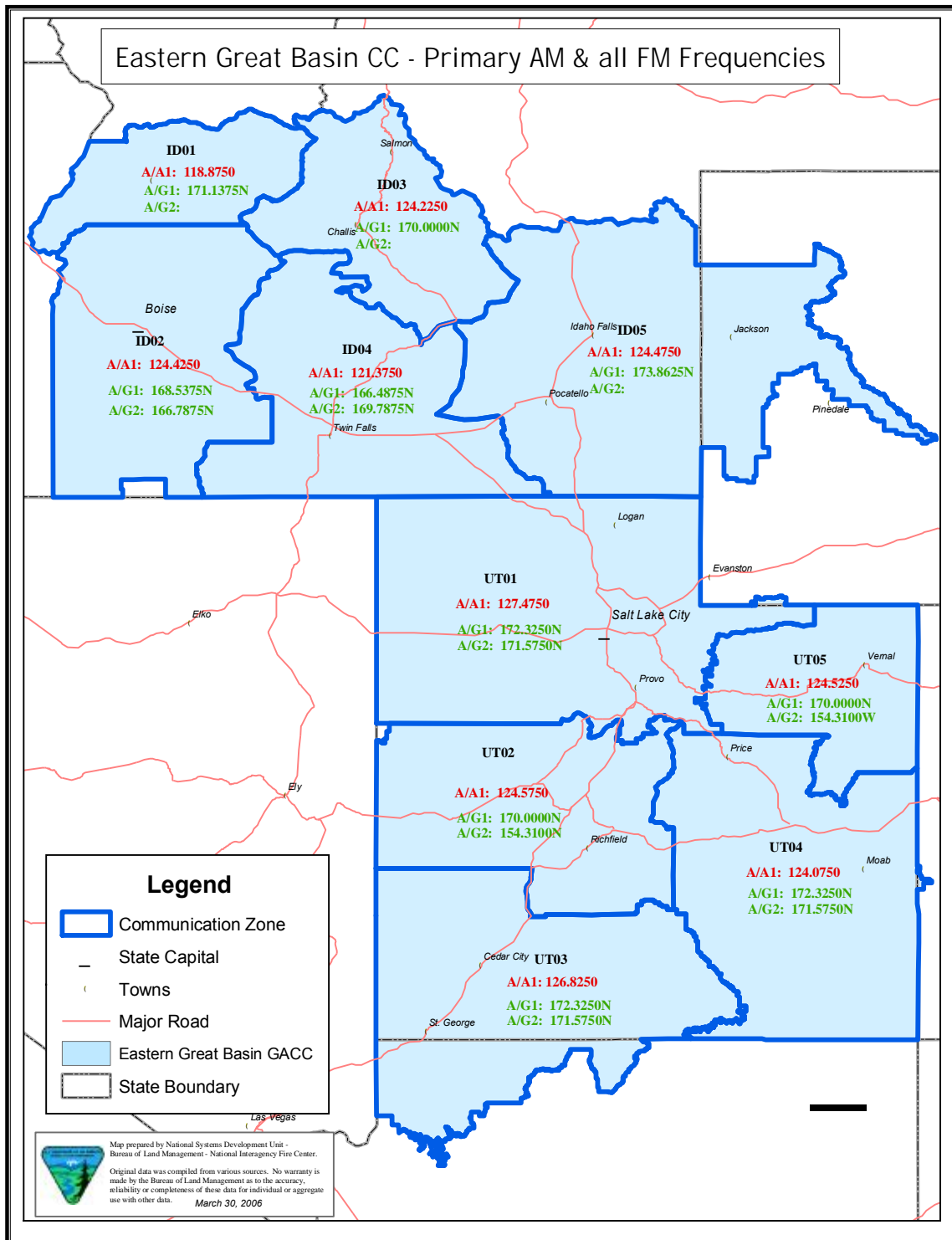
<b>ZONE</b>	<b>Primary Air/Air AM Frequency</b>	<b>Primary Air/Ground FM Frequency</b>	<b>Secondary Air/Ground FM Frequency</b>
Payette (ID01)	118.875	171.1375	Upon request
Boise (ID02)	124.425	168.5375	166.7875
Challis (ID03)	124.225	170.000	Upon request
Twin Falls ID04)	121.375	166.4875	169.7875
Idaho Falls (ID05)	124.475	173.8625	Upon request

Secondary VHF-AM frequencies for initial attack are available upon request, through channels, to the National Incident Radio Support Unit at NIFC.

**All Federal and State Frequencies Are Narrowband, City and County Are Wideband Unless Otherwise Designated**

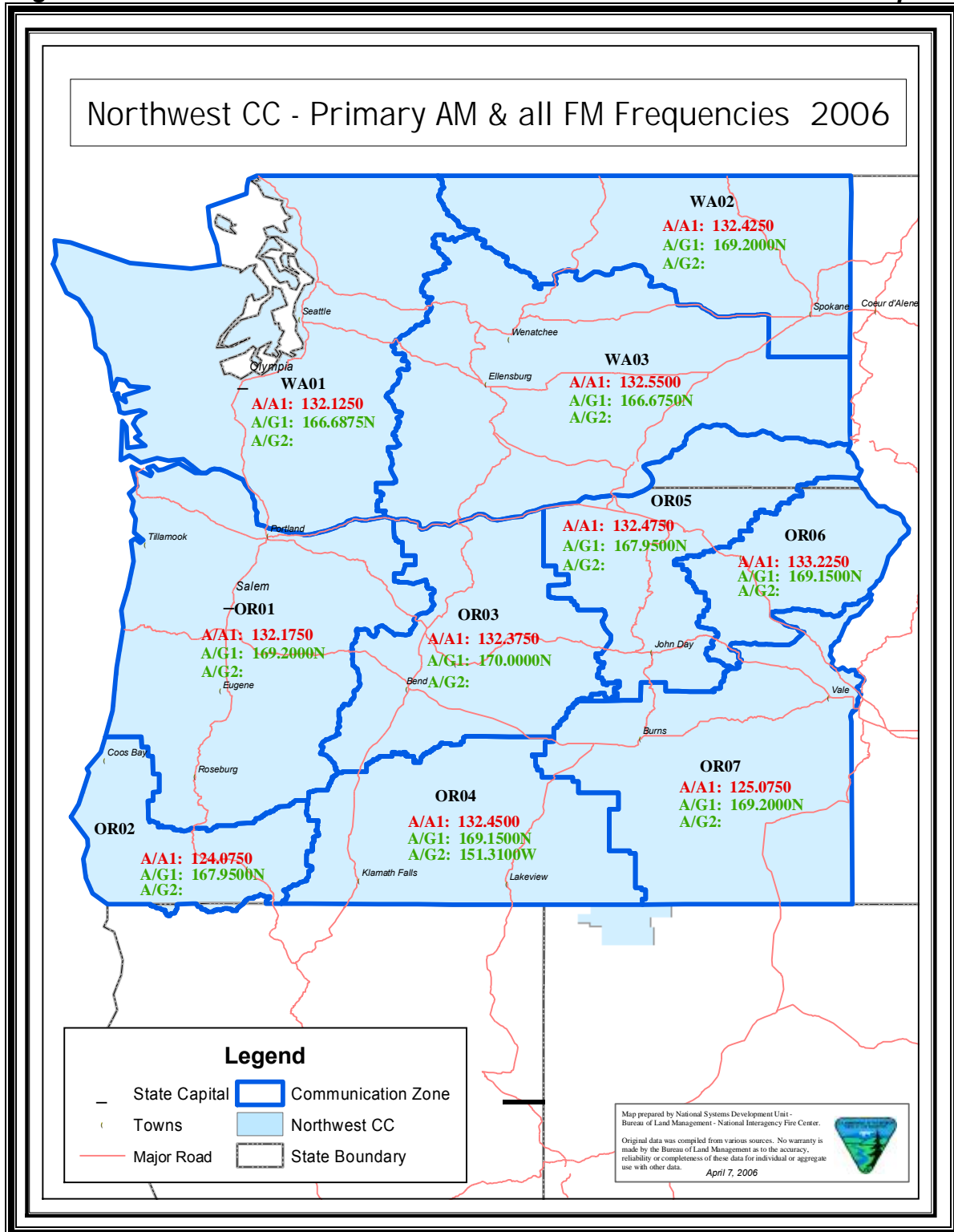
**2006 IDAHO BLM FIRE AVIATION ORIENTATION GUIDE**  
**APPENDIX E: FREQUENCIES**

**Figure E-1: Eastern Great Basin Area VHF-FM Air-Ground and VHF-AM Air-Air Frequencies**



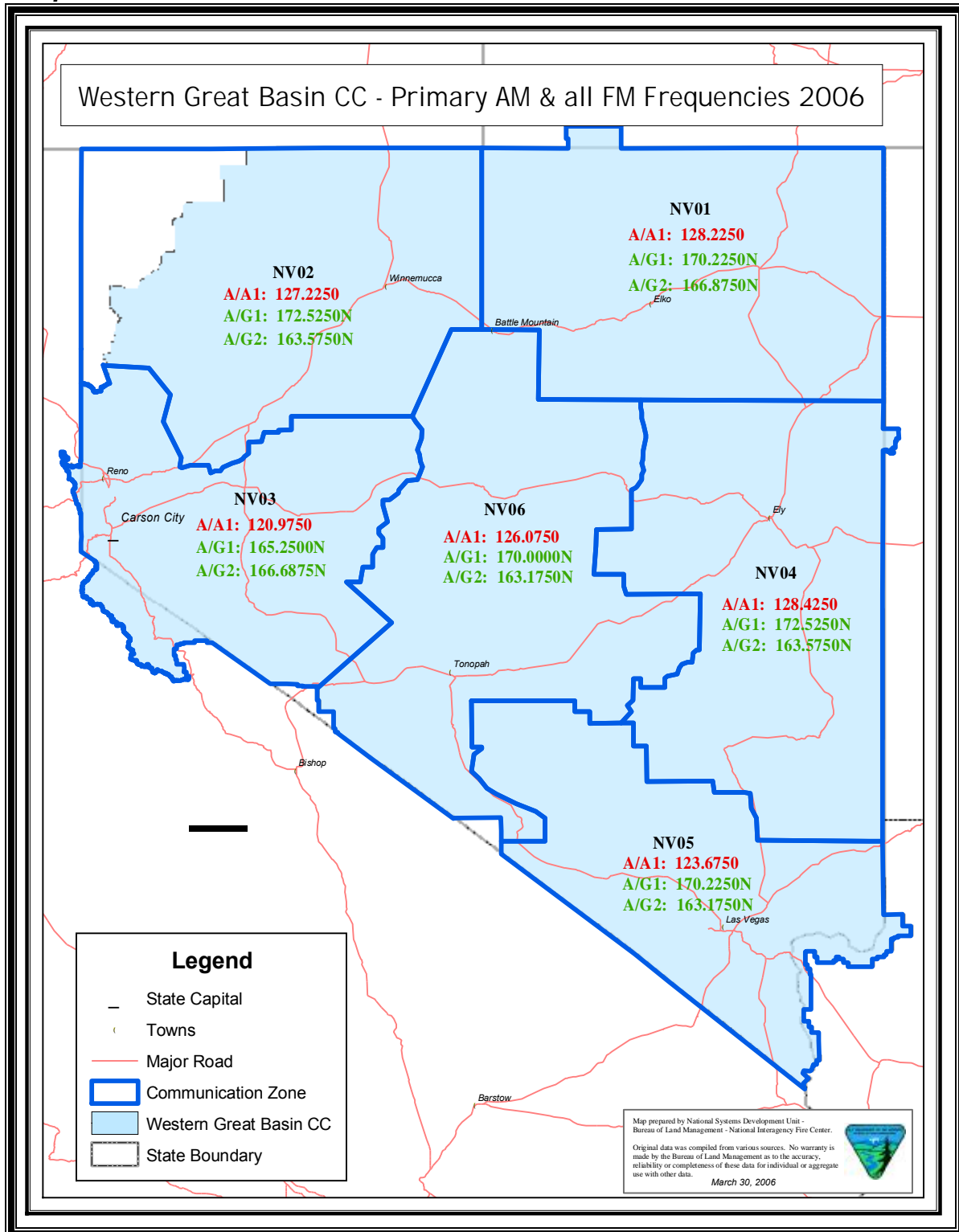
**2006 IDAHO BLM FIRE AVIATION ORIENTATION GUIDE  
APPENDIX E: FREQUENCIES**

**Figure E-2: Northwest Area VHF-FM Air-Ground and VHF-AM Air-Air Frequencies**



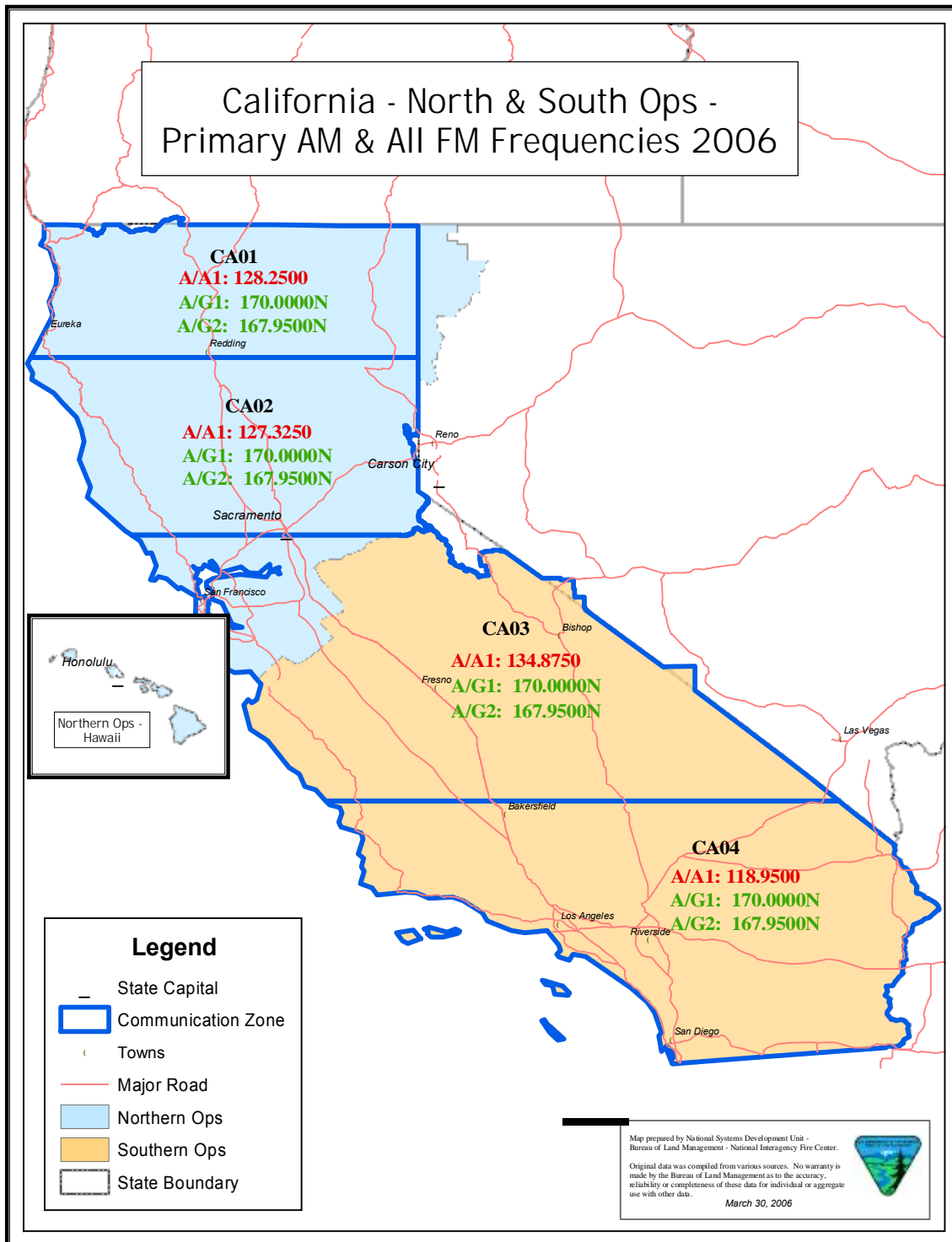
**2006 IDAHO BLM FIRE AVIATION ORIENTATION GUIDE  
APPENDIX E: FREQUENCIES**

**Figure E-3: Western Great Basin Area VHF-FM Air-Ground and VHF-AM Air-Air Frequencies**



**2006 IDAHO BLM FIRE AVIATION ORIENTATION GUIDE  
APPENDIX E: FREQUENCIES**

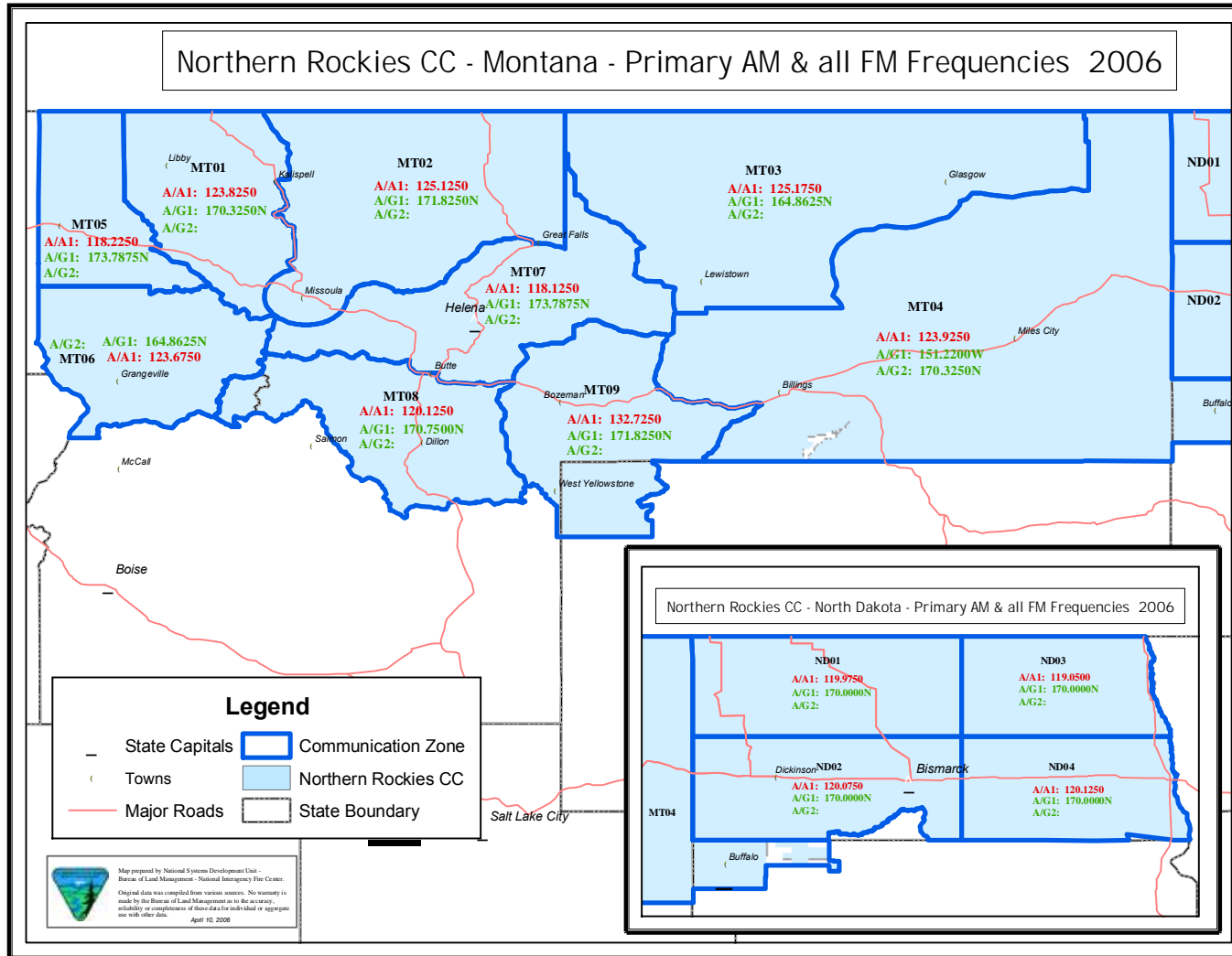
**Figure E-4: California Area VHF-FM Air-Ground and VHF-AM Air-Air Frequencies**



# 2006 IDAHO BLM FIRE AVIATION ORIENTATION GUIDE

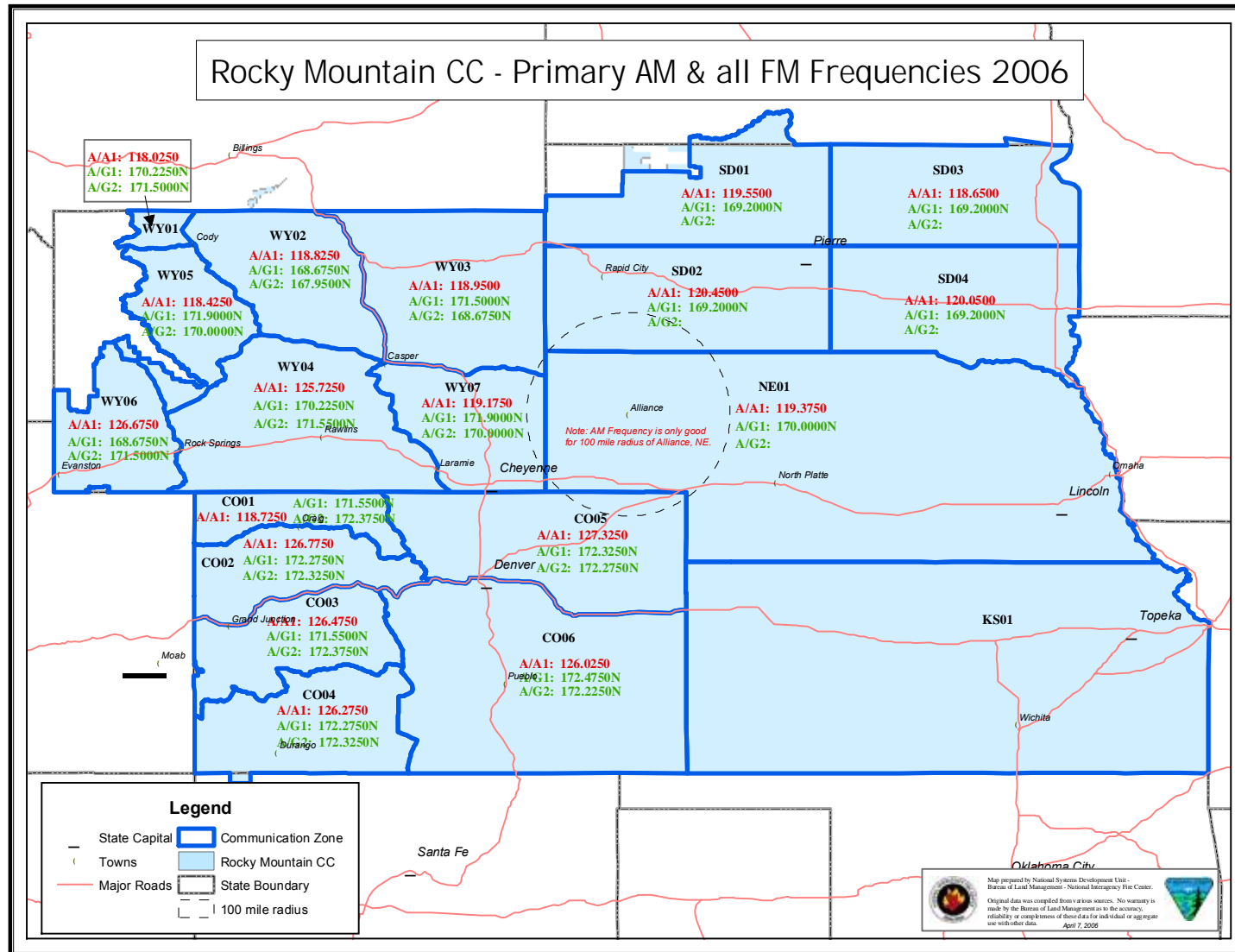
## APPENDIX E: FREQUENCIES

**Figure E-5: Northern Rockies Area VHF-FM Air-Ground and VHF-AM Air-Air Frequencies**



**2006 IDAHO BLM FIRE AVIATION ORIENTATION GUIDE  
APPENDIX E: FREQUENCIES**

**Figure E-6: Rocky Mtn Area VHF-FM Air-Ground and VHF-AM Air-Air Frequencies**



**2006 IDAHO BLM FIRE AVIATION ORIENTATION GUIDE  
APPENDIX E: FREQUENCIES**

**Table E-2: Boise District Frequency List (includes Boise NF frequencies)**

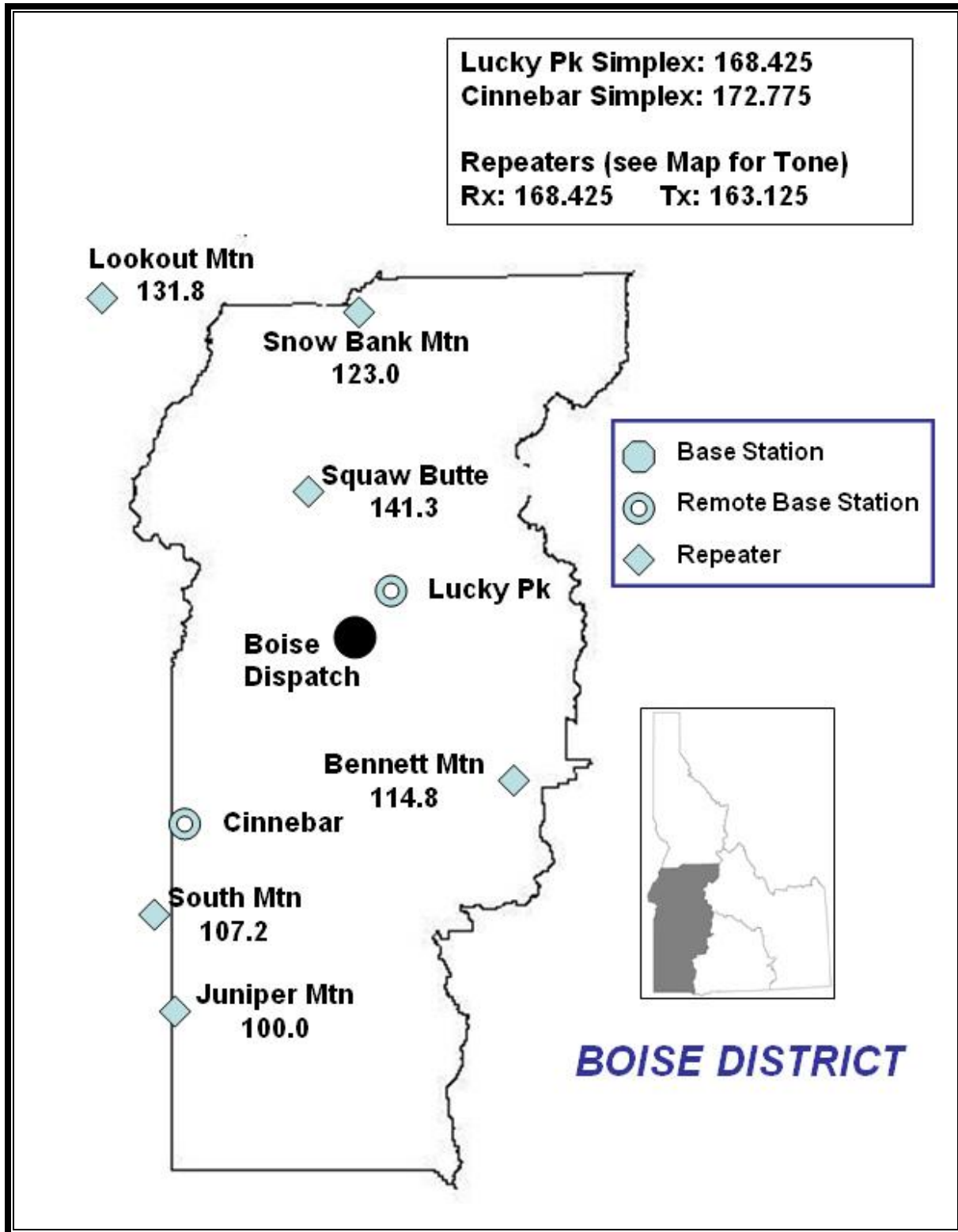
<b>Name</b>	<b>Tx</b>	<b>Rx</b>	<b>Tone</b>	<b>Geographic Location</b>
<b>STATEWIDE</b>				
IDAHO BLM Scene-of-Action (SOA)	167.150		None	NA; Direct Tactical Channel
<b>BOISE DISTRICT</b>				
<b>BASE STATIONS</b>				
<b>Boise Direct</b>	168.425		None	Lucky Peak
<b>TAC 1</b>	172.775		None	Cinnabar Mt
<b>TAC 2</b>	173.8625		None	
<b>REPEATERS</b>				
Lookout Mtn	163.125	168.425	131.8	NW : Hells Canyon Area
Snowbank Mtn	163.125	168.425	123.0	32 mi S of McCall/15 mi W of Cascade
Squaw Butte	163.125	168.425	141.3	North part of District; 10 mi N of Emmett; also a Remote Base
Bennett Mountain	163.125	168.425	114.8	10 mi E/NE of Mtn Home
South Mountain	163.125	168.425	107.2	Jordan Valley, OR Area
Juniper Mountain	163.125	168.425	100.0	SW corner of Idaho near Oregon Border
Cinnabar	163.125	168.425	151.4	West side above Silver City
Scene of Action Repeater	163.175	167.150	100.0	
<b>OTHER FREQUENCIES</b>				
Air-to-Ground Primary	168.5375		None	
Air to Ground Alternate	166.7875			
Air/Air VHF-AM	124.425		NA	Alternate is 122.925

**2006 IDAHO BLM FIRE AVIATION ORIENTATION GUIDE**  
**APPENDIX E: FREQUENCIES**

<b>Name</b>	<b>Tx</b>	<b>Rx</b>	<b>Tone</b>	<b>Geographic Location</b>
Fire Dept. Mutual Aid	154.280		None	Statewide, <b>Wideband</b>
BLM TAC-1	172.775		None	Used for Dist. South Command
BLM TAC-2	173.8625		None	Used for Dist. North Command
BLM TAC-3	164.550		None	
BLM TAC-4	172.625		None	
Boise NF and Ada County Air/Ground	172.325		None	Used for fires along Boise Front
Boise NF Flight Following	173.7625	173.7625	71.9	
Boise NF Simplex South Zone	172.200	172.200	123.0	
Boise NF Simplex North Zone	171.450	171.450	123.0	
ID Dept of Lands Air/Ground	151.145		100.0	
NIFC Ramp VHF-AM	135.675		NA	
Boise Air Tanker Base	123.975		NA	
National Flight Follow	168.650		None	On Lucky Peak above Boise
WX Boise/Idaho Falls	162.550		None	

2006 IDAHO BLM FIRE AVIATION ORIENTATION GUIDE  
APPENDIX E: FREQUENCIES

Figure E-7: Boise District Frequency Map



**2006 IDAHO BLM FIRE AVIATION ORIENTATION GUIDE  
APPENDIX E: FREQUENCIES**

**Table E-3: BLM VHF-FM Frequencies: Idaho Falls District**

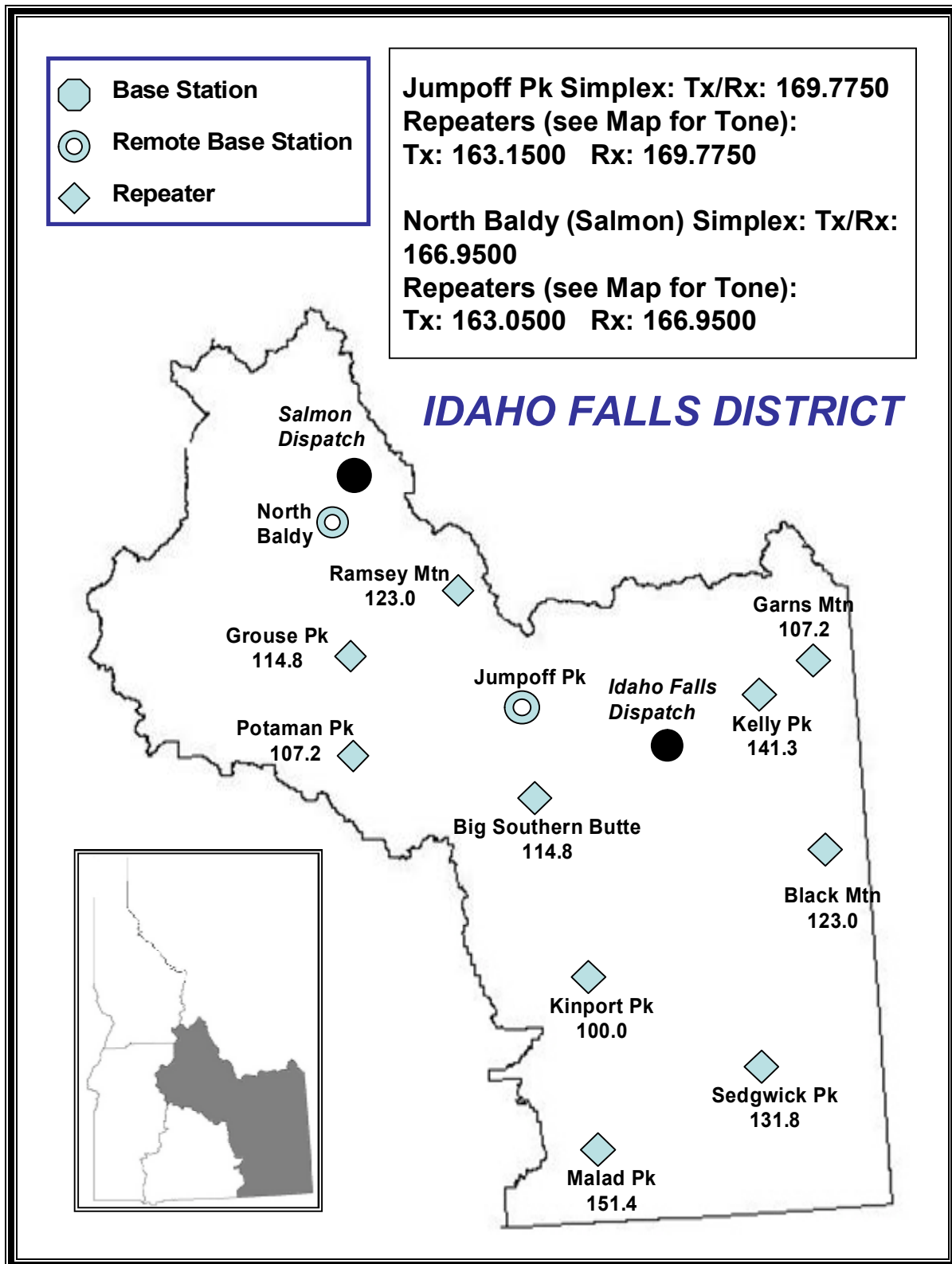
<b>Name</b>	<b>Tx</b>	<b>Rx</b>	<b>Tone</b>	<b>Geographic Location</b>
<b>STATEWIDE</b>				
IDAHO BLM Scene-of-Action (SOA)	167.150	167.150		NA; Direct Air-Ground
<b>IDAHO FALLS DISTRICT</b>				
Air/Ground BLM Idaho Falls	173.8625		None	NA
<b>Jumpoff Peak (Idaho Falls Simplex)</b>	169.7750	169.7750	None	<b>Remote Base Station</b>
Garns Mtn	163.1500	169.7750	107.2	13 mi SW of Driggs
Big Southern Butte	163.1500	169.7750	114.8	22 mi SE of Arco
Black Mtn	163.1500	169.7750	123.0	7 mi SW of Alpine, WY
Kinport Peak	163.1500	169.7750	100.0	2 mi SE of Pocatello
Kelly Mtn	163.1500	169.7750	141.3	22 mi E of Idaho Falls
Sedgewick Pk	163.1500	169.7750	131.8	8 mi SE of Lava Hot Springs
Malad Peak	163.1500	169.7750	151.4	Also a Shoshone/Burley Repeater with different Rx/Tx and Tone
Portable Repeater	163.1750	169.7750	162.2	
Scene of Action Repeater Local Flight Following	163.1750	167.1500	114.8	
<b>North Baldy (Salmon Simplex)</b>	166.9500	166.9500	None	
Ramsey Mtn	163.0500	166.9500	123.0	2 mi NE of Lemhi
Grouse Peak	163.0500	166.9500	114.8	7 mi ENE of Challis
Potaman Peak	163.0500	166.9500	107.2	17 mi SW of Challis
Portable Repeater	163.0500	166.9500	162.2	
Scene of Action Repeater	163.1750	167.1500	123.0	
<b>OTHER FREQUENCIES</b>				
Air/Ground - Zone 1	170.150	170.150	None	Contact Dispatch for which Zone

**2006 IDAHO BLM FIRE AVIATION ORIENTATION GUIDE  
APPENDIX E: FREQUENCIES**

<b>Name</b>	<b>Tx</b>	<b>Rx</b>	<b>Tone</b>	<b>Geographic Location</b>
Air/Ground - Zone 2	172.325	172.325	None	you are operating in
Air/Ground - Zone 3	170.4750	170.4750	None	
Air/Ground - Zone 4	170.1500	170.1500	None	
Air/Ground - Zone 5	172.3250	172.3250	None	
Flight Following Challis-Salmon NF	166.5875	170.1250	Long Tom: 123.0 Twin Peak 103.5	
Air/Air VHF-AM		124.475		
Air/Air VHF-AM Challis-Salmon NF		124.225		
WX Boise/Idaho Falls	None	162.550	None	

**2006 IDAHO BLM FIRE AVIATION ORIENTATION GUIDE  
APPENDIX E: FREQUENCIES**

**Figure E-8: Idaho Falls District Frequency Map**





**2006 IDAHO BLM FIRE AVIATION ORIENTATION GUIDE  
APPENDIX E: FREQUENCIES**

**Table E-4: BLM VHF-FM Frequencies: Twin Falls District (Includes USFS Frequencies)**

<b>Description</b>	<b>Tx</b>	<b>Rx</b>	<b>Tone</b>
Notche Butte (Shoshone Direct) SIMPLEX		166.8500	None
Mt. Harrison (Burley Direct) SIMPLEX		168.5625	None
<b>NOTE: For Zones, see Figure E-15, BLM and USFS <u>Interagency</u> VHF-FM Frequency Map for the Twin Falls District and US Forest Service</b>			
<b>Zone 1</b>			
Command (FS Mt Zumwalt)	162.0250	172.250	167.9
Command (FS Sheep Mtn)	162.0250	172.250	156.7
Command (FS Horton Pk)	162.0250	172.250	136.5
Air / Ground	172.3250	172.3250	None
Tactical (FS Crew Net)	162.2250	162.2250	None
<b>Zone 2</b>			
Command (FS Big Pk)	162.0250	172.2500	146.2
Command (FS Steel Mtn)	162.0250	172.2500	103.5
Air / Ground	172.3250	172.3250	None
Tactical (FS Crew Net)	162.2250	162.2250	None
<b>Zone 3</b>			
Command (BLM Davis Mtn)	163.0250	166.8500	114.8
Air / Ground North (BLM A/G Frequency)	166.4875	166.4875	None
Tactical (BLM TAC 3)	164.5500	164.5500	None
<b>Zone 4</b>			
Command (FS Bell Mtn)	162.0250	172.250	131.8
Command (BLM Bell Mtn)	163.0250	166.850	131.8
Air/Ground North (BLM A/G Frequency)	166.4875	166.4875	None
Tactical (BLM Tac 3)	164.5500	164.550	None

**2006 IDAHO BLM FIRE AVIATION ORIENTATION GUIDE  
APPENDIX E: FREQUENCIES**

<b>Zone 5</b>			
<b>Description</b>	<b>Tx</b>	<b>Rx</b>	<b>Tone</b>
Command (FS Black Pine)	162.6125	171.5000	110.9
Command (BLM Harrison)	163.0750	168.5625	107.2
Command (BLM Twin Pk)	163.0750	168.5625	123.0
Command (FS Magic Mtn)	162.6125	171.5000	123.0
Air / Ground South (BLM A/G Frequency)	169.7875	169.7875	None
Tactical (FS Crew Net)	162.2250	162.2250	None
<b>Zone 6</b>			
Command (BLM Magic Mtn)	163.0750	168.5625	100.0
Command (FS Knoll Mtn)	162.6125	171.5000	131.8
Command (BLM Davis Mtn)	163.0250	166.8500	114.8
Air / Ground South (BLM A/G Frequency)	169.7875	169.7875	None
Tactical (BLM TAC 2)	173.8625	173.8625	None
FS North SOA Repeater	162.0250	172.2500	179.9
FS South SOA Repeater	162.6125	171.5000	179.9
Logistics (Wide Area Use)	163.1000	163.1000	None

**2006 IDAHO BLM FIRE AVIATION ORIENTATION GUIDE  
APPENDIX E: FREQUENCIES**

**Figure E-10: Twin Falls District Frequency Map**

